

PECAN GROVE FARMS  
BROWNWOOD RANCH

FLOW BASED ON 2.22 GPH @ 60" SPACING (DUAL-LINE)

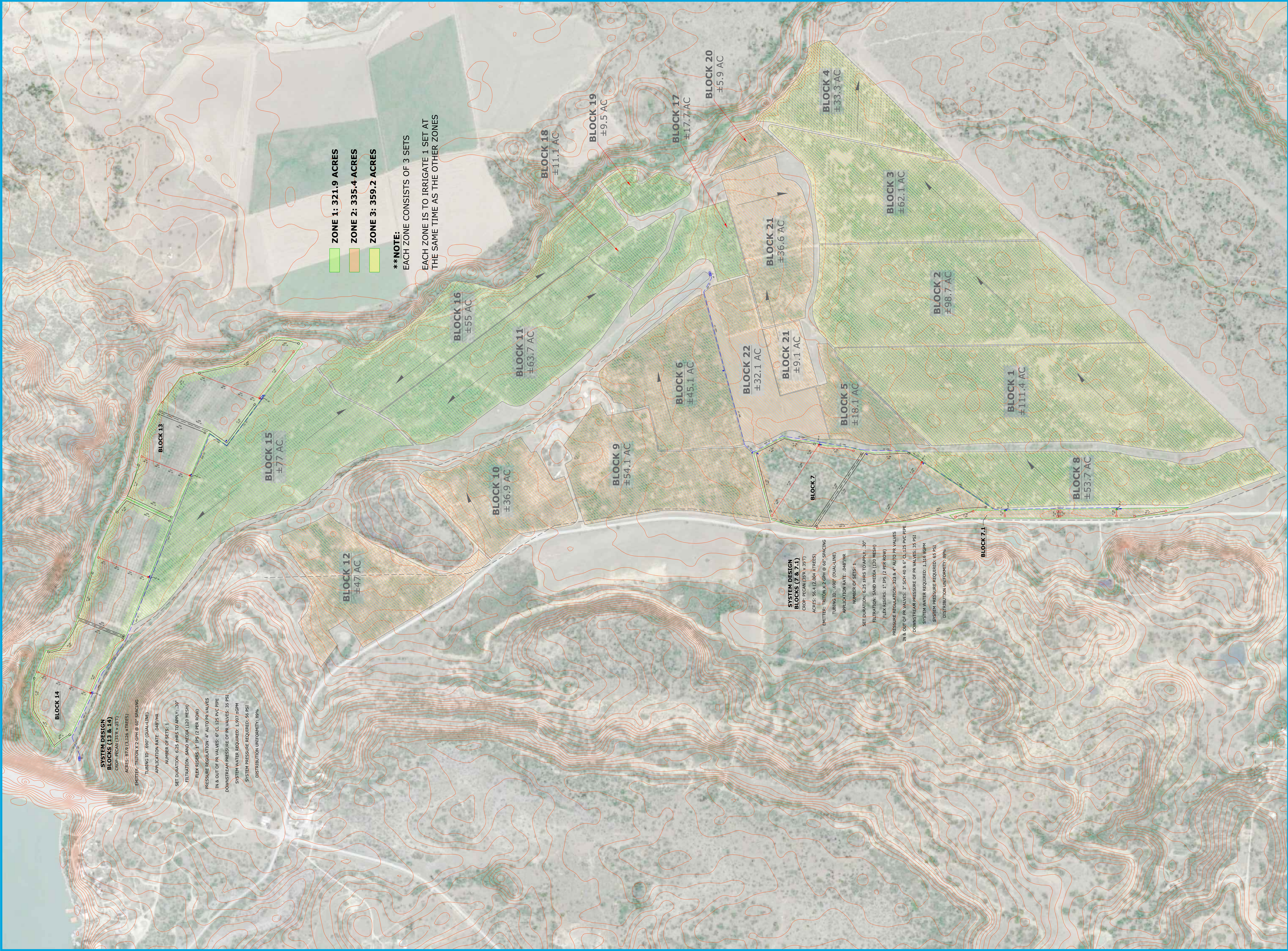
*18.42 gpm/acre*  
*.0407 INCH/HZ =*  
*.9768 inch/day<sup>24HZ</sup>*

BLOCK	AREA (FT <sup>2</sup> )	AREA (ACRE)	TREES	FLOW (GPM)
<i>F</i> - 13	1825164	41.9	1,490	772
<i>F</i> - 14	1999404	45.9	1,632	845
15	3354120	77	2,738	1418
11	2774772	63.7	2,265	1173
16	2395800	55	1,956	1013
17	771012	17.7	629	326
18	483516	11.1	395	204
19	413820	9.5	338	175
20	257004	5.9	210	109
21	1990692	45.7	1,625	842
22	1398276	32.1	1,141	591
12	2047320	47	1,671	866
10	1607364	36.9	1,312	680
9	2356596	54.1	1,924	997
6	1964556	45.1	1,604	831
5	788436	18.1	644	333
<i>F</i> - 7	2178000	50	1,778	921
<i>F</i> 3 ROWS	280090.8	6.43	229	118
8	2339172	53.7	1,910	989
1	4852584	111.4	3,961	2052
2	4299372	98.7	3,510	1818
3	2705076	62.1	2,208	1144
4	1450548	33.3	1,184	613
<b>TOTAL</b>		<b>1022.3</b>	<b>36,353</b>	



PREPARED FOR:  
**PECAN GROVE FARMS - BROWNWOOD RANCH**  
**140 SPILLWAY RD. BROWNWOOD, TX 76801**

SCALE: 1" = 500'  
 DATE: 3/31/2017  
 DESIGN: #3705  
 DRAWN BY: AR  
 2405 CHANDLER ST.  
 P.O. Box 190  
 SELMA, CA 93662



SCALE: 1" = 500'  
 DATE: 4/24/2017  
 DESIGN: #3705  
 DRAWN BY: AR  
 2405 CHANDLER ST.  
 P.O. Box 190  
 SELMA, CA 93662

PREPARED FOR:

PECAN GROVE FARMS - BROWNWOOD RANCH  
 140 SPILLWAY RD. BROWNWOOD, TX 76801

